

# Water and Sewer



## WATER AND SEWER OVERVIEW

SCIP has extensive experience in the engineering design of a wide variety of water and sewer projects. Using the latest computerised design applications, SCIP provides optimised solutions within budget and on time. We are able to facilitate accurate bidding and quoting by supplying highly detailed drawings and design specifications. These also ensure that the construction phase runs smoothly. Irrespective of the size of the project, special attention is given to the coordination between all disciplines involved. We believe that the key to SCIP's success is based on intelligent decision-making in the early design stages, as well as on our open communication style.

## AREAS OF EXPERTISE

- Master Planning
- Water System Modelling and Design
- Water Storage
- Reservoirs and Water towers
- Water main pipelines
- Corrosion Control
- Sewer reticulation
- Raw and potable water pump stations and pumping mains
- Sewer Treatment Plant Design
- Sewer System Modelling and Design
- Outfall sewers
- Infrastructure Rehabilitation and assessment
- Regulatory Compliance Evaluations
- Pump Station Design
- Regulatory Compliance/Permitting
- GIS and Utility Mapping
- Safe Yield Analysis for dams
- Water Resources Modeling and Planning
- Flood modeling for dams

## INTEGRATED CONSULTING SERVICES

### Benoni Outfall Sewer and Pump station

01



**Client**

Ekurhuleni Metropolitan Municipality

**Date of completion**

April 2014

**Value of contract**

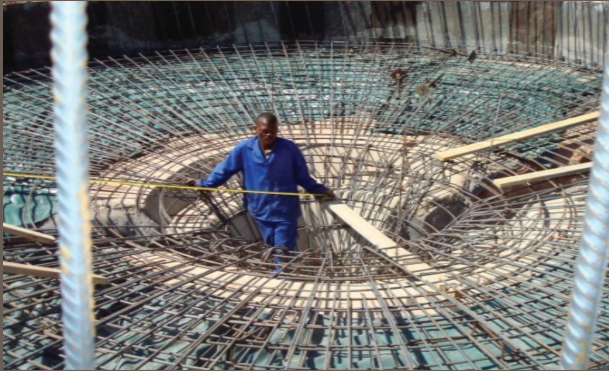
R 25 mil

**Details**

Design and supervision of outfall sewer pipelines with diameters from up to 900mm, a sewer pump station and a rising main

### Refilwe Waste Water Treatment Works

03



**Client**

Nokeng Tsa Taemane Local Municipality

**Date of completion**

July 2010

**Value of contract**

R 21 mil

**Details**

Upgrading of the existing Refilwe WWTW, pumpstation and discharge pipeline including the design and construction of a 1.1ml sewer treatment plant, the outflow pumpstation and 10km discharge pipeline .

### Witbank Dam Pump Station

02



**Client**

Nokeng Tsa Taemane (City of Tshwane)

**Date of completion**

2004

**Value of contract**

R 12 mil

**Details**

Design and site supervision of a water pump station including water mains.

### Golden Gardens Civil Services

04



**Client**

Gauteng Department of Human Settlements

**Date of completion**

August 2014

**Value of contract**

R40 mil

**Details**

Design and site supervision of civil services for 1000 stands in Golden Gardens

## SCIP EXPERTISE

SCIP has extensive knowledge and experience in project and construction management, housing developments, municipal and structural engineering, provincial and national roads, bridges, as well as labour intensive construction methods and skills development.

### We specialise in the following areas:

- Affordable housing developments
- Labour intensive construction
- Project management
- Water
- Stormwater
- Flood analysis
- Sewer
- Roads
- Structures
- Sports facilities
- Recreation facilities
- Design and construct projects
- Abattoirs
- Effluent treatment

## CONTACT

### JOHANNESBURG

128 Beyers Naudé Dr.  
cnr Mendelssohn Rd.  
Roosevelt Park, 2195  
Johannesburg, Gauteng

PO Box 48550  
Roosevelt Park, 2129  
Johannesburg

T: [011] 888 1425  
F: [011] 888 1075  
E: joburg@scip.co.za

### EMALAHLENI

Smokey Mountain  
Office Block  
N4 Business Park  
eMalahleni, Mpumalanga

PO Box 372  
eMalahleni, 1035  
Mpumalanga

T: [013] 656 2660/8  
F: [013] 656 3325  
E: witbank@scip.co.za

### EAST LONDON

Bonza Bay Road  
Beacon Bay, East London  
Buffalo City Municipality  
Eastern Cape

T: 083 759 7831  
E: eastlondon@scip.co.za

### PRETORIA

Office 8, South Pavilion  
Loftus Versveld Stadium  
Kirkness Street  
Sunnyside, Pretoria, 0002

T: 082 405 6633  
E: tshwane@scip.co.za

### MATLOSANE

41 Central Ave  
Flamwood  
Office 20  
Matlosane, 2571

T: 082 379 3559  
E: NW@scip.co.za

### KWAZULU NATAL

M486  
Unit 12  
Umlazi, 4031

T: 083 294 5131  
E: KZN@scip.co.za

### BOSKBURG

13 Brink Ave, Boskborg  
Ekurhuleni, Gauteng, 1456

T: 082 924 4398  
E: boksborg@scip.co.za

STRUCTURES & BUILDINGS  
ROADS & STORMWATER  
HOUSING & HUMAN SETTLEMENT  
WATER & SEWER  
ABATTOIR & MEAT PROCESSING



**Van Vliet De Wet  
& Partners**  
Consulting Engineers

[www.scip.co.za](http://www.scip.co.za)